

QRMH9

QUALITATIVE RESEARCH
IN MENTAL HEALTH

BUDAPEST

31.8.-2.9.2023



**CONFERENCE
PROGRAMME**





**Building bridges in times of uncertainty:
The role of qualitative research
in mental health and well-being**

August 31 – September 2, 2023
Budapest, Hungary

Conference Venue
Eötvös Loránd University (ELTE)

Conference Chairs



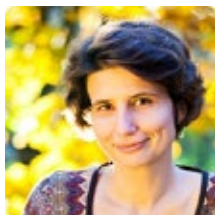
Angela Abela
Professor in Child and Family Studies, Faculty for Social Wellbeing, University of Malta, Malta



Maria Borcsa
Professor in Clinical Psychology, Institute of Social Medicine, Rehabilitation Sciences and Healthcare Research, University of Applied Sciences Nordhausen, Germany



Zsuzsa Kaló
Habil. Associate Professor, Institute of Psychology Lecturer, Head of Department of Counselling and School Psychology, ELTE University, Budapest, Hungary



Viola Sallay
Assistant Professor, Clinical Health Psychologist, Family Therapist, University of Szeged, Institute of Psychology, Hungary

National Committee

- Eszter Berán, *Pázmány Péter Catholic University*
- Veronika Bocsi, *University of Debrecen*
- Péter Bodor, *Faculty of Education and Psychology (ELTE)*
- Zsuzsanna Bögre, *Pázmány Péter Catholic University*
- Márta Csabai, *Károli Gáspár University of the Reformed Church*
- Bea Ehman, *Research Centre for Natural Sciences of the Hungarian Academy of Sciences*
- Márta B. Erdős, *University of Pécs*
- Anikó Illés, *Moholy-Nagy University of Art and Design*
- Lan Anh Nguyen Luu, *Faculty of Education and Psychology (ELTE)*
- Bernadette Péley, *University of Pécs*
- József Rácz, *Faculty of Education and Psychology (ELTE)*

International Committee

- Eugenie Georgaca, *Aristotle University of Thessaloniki, Greece*
- Julia Hille, *Otto von Guericke University Magdeburg, Germany*
- Philia Issari, *University of Athens, Greece*
- Lorien Jordan, *University of South Florida, USA*
- Anne Krayner, *Bangor University, U.K.*
- Juri Krivzov, *Ghent University, Belgium*
- Linda McMullen, *University of Saskatchewan, Canada*
- Hugh Middleton, *University of Nottingham, U.K.*
- Constantina Papoulias, *King's College London, U.K.*
- Rachel Ravid, *Oranim Academic College of Education, Israel*
- Gesine Sturm, *Université Toulouse- Jean Jaurès, France*

Welcome

Dear Presenters and Participants,

A warm welcome to all contributors of the 9th QRMH conference, representing diverse corners of the globe!

This year, we have the privilege of meeting in beautiful Budapest, a place characterised by being divided into two parts, Buda and Pest, and gracefully situated on the banks of the Danube. Buda, with its historical core, and Pest, a bustling hub of urban life, together create the splendid tapestry of Budapest. The city is adorned with iconic bridges, such as the renowned Chain Bridge, the Liberty Bridge, and the Margaret Bridge. Symbolically, for this year's QRMH conference, we have chosen the image of a bridge. Bridges, in their essence, unite diverse landscapes, perspectives, and resources. Our chosen motto aptly reflects this concept: "Building bridges in times of uncertainty: The role of qualitative research in mental health and well-being."

Communities worldwide are navigating through periods of uncertainty: the everyday consequences of the global health crisis, wars, and the looming climate crisis lead to the loss of secure relationships and environments. Clients, patients, and caregivers may underestimate the role of those circumstances, the years of isolation, and the crisis that we lived together and expect the same progress or performance they planned. Mental health is also impacted by the inequalities within and between communities and the growing burden on caregivers and professionals working in mental health care settings. The QRMH9 conference is dedicated to shedding light on the profound mental health repercussions of these factors.

The landscape of mental health challenges is complex and requires a united effort to address them effectively. With the diverse experiences and expertise gathered at the QRMH9 conference, we, as a scientific community, possess the capacity to make a meaningful impact on the lives of individuals, families, and communities. We firmly believe in fostering connections across perspectives, disciplines, and methodologies. Hence, we have invited keynote speakers from diverse fields, ranging from qualitative psychology to philosophy and social sciences. Moreover, we extend a warm welcome to all presenters representing a large variety of domains.

This year's host institution is the Eötvös Loránd University (ELTE). Established in 1635, ELTE stands as one of Hungary's oldest and most prestigious educational establishments, holding a place within the top 2% of universities worldwide. It is renowned for its commitment to academic excellence and a vibrant academic community.

May our time together during this conference be a source of inspiration, knowledge enrichment, and profound impact.

QRMH Conference Chairs

Invited Speakers



Erminia Colucci
*Professor of Psychology,
Middlesex University of
London, United Kingdom*



Anikó Gregor
*Associate Professor, ELTE
University, Hungary*



**Jonathan Smith
(ONLINE)**
*Professor of Psychology,
Birkbeck University of
London, United Kingdom*



Eleftheria Tseliou
*Professor of Research
Methodology and
Qualitative Methods,
University of
Thessaly, Greece*



Tamás Ullmann
*Professor of Philosophy,
ELTE University, Hungary*

Pre-conference Workshops

Co-produced and participatory visual methods in cultural and global mental health research

Erminia Colucci

Professor, Middlesex University London, United Kingdom

Conversation analysis in the study of a grieving family and couple therapy

Bernadetta Janusz

Assistant Professor, Jagellonian University, Poland

Anssi Peräkylä

Professor, University of Helsinki, Finland

Teamwork in Qualitative Research: learning from the South Asia Self-harm project (SASHI)

Anne Krayer

Centre for Mental Health and Society, Bangor University, United Kingdom

Experience mapping in qualitative research: discovering embodied and embedded experiences in the lived space

Viola Sallay

Assistant Professor, University of Szeged, Hungary

Tamás Martos

Associate Professor, University of Szeged, Hungary

How to analyze psychotherapeutic training processes with (critical) discursive research methodologies

Eleftheria Tseliou

Professor, University of Thessaly, Greece

Invited Symposia

Explorations on researcher identity

Chair(s): Marta Erdos, University of Pécs, Hungary

Rebeka Javor, University of Pécs, Hungary

Researching hard-to-reach children and their families using a creative methodology

Chair(s): Kylie Poppe, University of Malta, Malta

Angela Abela, University of Malta, Malta

Host City | Budapest



Budapest, the capital of Hungary, is one of the best kept secrets in Europe. It is the ninth-largest city in the European Union by population within city limits and the second-largest city on the Danube river; This beautiful city is divided into two towns by the **UNESCO World Heritage** awarded Danube River. The east side is called *Buda* and the west side is called *Pest*.

Crowning the capital atop Castle Hill, Buda Castle presents an architectural melting pot, with Renaissance ruins around the foundations, a grand Habsburg-era neoclassical façade, and a stark communist-style interior. The palace is divided into three museums: The Hungarian National Gallery, the Budapest History Museum, and the National Széchényi Library.

Similar important sights include the Hungarian Parliament which lies atop Danube's banks, the Chain Bridge that connects the two bisected cities, the monumental Hero Square and many more.

The picturesque city of Budapest is meant for those who enjoy a rich variety of sights. The Hungarian capital offers a rich combination of history and excitement, with its small lanes, romantic riverbank promenades and plethora of gastronomic surprises for you to discover.

Often called the "Paris of the East", Budapest's flamboyant architecture comprises of grand buildings and centuries-old thermal baths. Its classical façade, however, belies a vibrant and exciting city filled with modern art, a thrilling nightlife, and stylish restaurants.

More information can be found on: <https://www.budapestinfo.hu/budapest>

The Venue

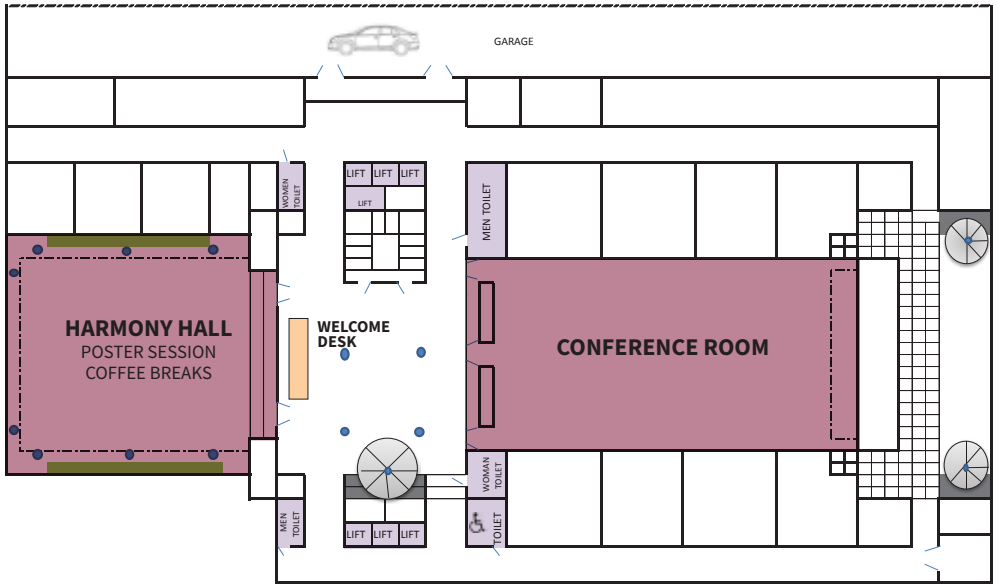


The QRMH9 conference will be held in the **Eötvös Loránd University (ELTE), Budapest.**

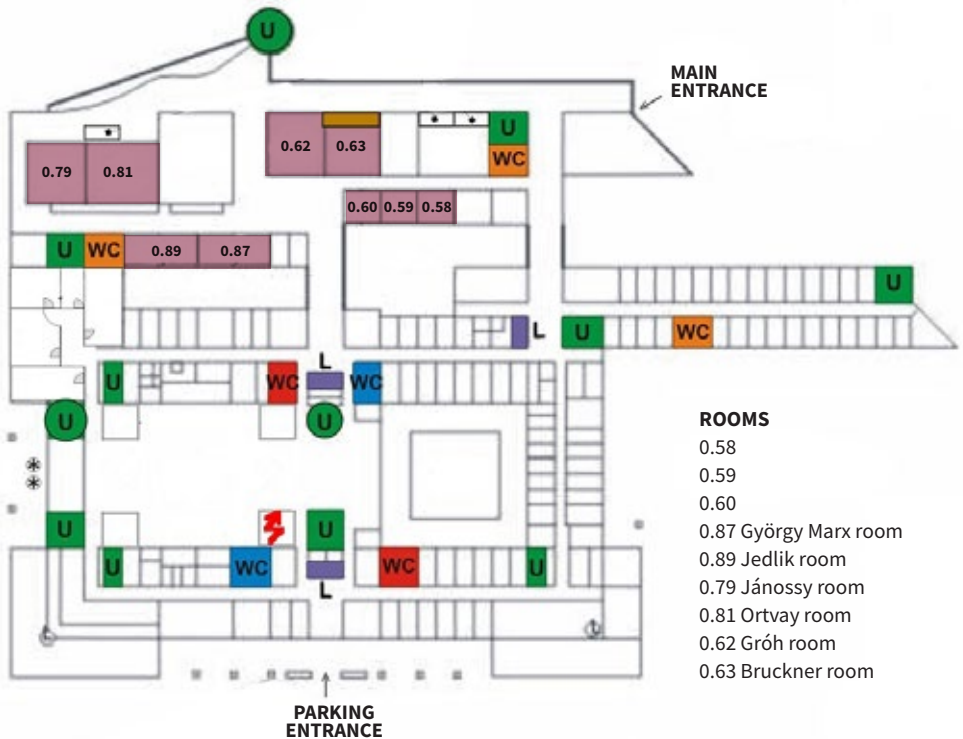
It is the oldest and largest university in Hungary and it is the most popular higher education institution among applicants each year. As the leading research university in Hungary, the name of ELTE means knowledge, opportunities, competition, openness and community. Founded in 1635, ELTE is one of the largest and most prestigious public higher education institutions in Hungary. The 28,000 students at ELTE are organized into nine faculties, and into research institutes located throughout Budapest and on the scenic banks of the Danube. ELTE is affiliated with 5 Nobel laureates, as well as winners of the Wolf Prize, Fulkerson Prize and Abel Prize, the latest of which was Abel Prize winner László Lovász in 2021.



Floor -1



Floor 0



ROOMS

- 0.58
- 0.59
- 0.60
- 0.87 György Marx room
- 0.89 Jedlik room
- 0.79 Jánossy room
- 0.81 Ortvy room
- 0.62 Gróh room
- 0.63 Bruckner room

Registration

Registration	By June 15, 2023	By June 15, 2023
Regular Delegates	€300	€350
Low Income	€200	€250
Students	€90	€150

The registration fee includes:

- Conference Material
- Conference Sessions
- Coffee Breaks during the 3day sessions
- Welcome Reception

Conference Management



SYMVOLI | Conference & Cultural Management is one of Greece's leading event management companies, that specializes in designing and organizing scientific conferences and corporate events, cultural events and projects from the initial stages of conception to the final stages of implementation and production.

We pride ourselves on our consistency in delivering services of the highest quality to our partners, as well as on our creative approach and out-of-the-box thinking on project and event management.

Within the 30 years of our professional operation, we produced more than 500 projects, in 46 cities in Greece and abroad (ex. Berlin, Malta, Naples, Ljubljana, Budapest, Lyon), we connected more than 250.000 participants with their project of interest, and we established and nurtured 1030 collaborations and partnerships with national scientific and academic institutions, international organizations, public authorities and private stakeholders, as well as different suppliers and associates.

www.symvoli.gr

You can also contact the conference management company at:

qrmh9@symvoli.gr

Welcome Desk

The conference welcome desk will be located at the Foyer (-1) and will operate during the following ours:

Thursday, August 31st	08:00-18:30
Friday, September 1st	08:00-17:00
Saturday, September 2nd	09:00-13:00

Special Thanks to:



POSTER AWARD SPONSOR

Presentations | Technical Secretariat

The time allocated for oral presentations is **20 minutes**, consisting of 15 minutes for the presentation and followed by a maximum of 5 minutes for questions and discussion. In order to keep the conference on schedule and accommodate delegates who want to move between sessions, Chairs are asked to strictly enforce the time schedule.

Delegates are kindly requested to check the final programme in order to confirm the allocated **time** and **hall** for their presentation, as well as to be informed about the Chair of their session. They are also advised to make their presence known to the Chair before the session starts and to be present during the entire session in which their presentation is scheduled.

Presenters are required to pre-load their presentation on the conference laptops with a USB stick AT LEAST 1 hour prior to their talk (or during breaks) at the allocated hall of presentation.

Personal laptops are not allowed.

Poster Session

The Poster session is held in the HARMONY Hall (-1) on Friday, September 1st, from 13:30 to 14:30.

Setup: You may set up your poster any time between 09:00 and 12:00 that day. All posters should be removed during the coffee break on Friday (16:15 - 16:45). The secretariat will be there to assist you.

Size and Shape: All posters are displayed on a floor standing pin board with 1 presentation per side. The poster presentation boards are 1.00-meter WIDE by 2.00-meters HIGH and, allowing for the frame, each presenter will have 0.70 x 1.00 meters for his or her display.

What to Bring: You should bring the printed content, but you DO NOT need to bring the poster board itself or pins for attaching your poster. The secretariat will supply the poster board and all necessary material.

Conference Language



The official language of the conference is English. There will be no simultaneous translation in other languages.

Internet Access



High-speed wireless internet access is available in all areas of the conference venue. (SSID: **CONFERENCE** | Password: **ELTE2308**)

Transportation

Eötvös Loránd University (ELTE) is located in the city centre, 17 km from Budapest Airport (BUD)

Address: ELTE Lágymányosi Campus 1117 Budapest, Pázmány Péter Sétány 1/A.

The venue is easily accessed from every part of the city:



Public transport

- Tram 4/6: Petőfi bridge, Buda side (Goldmann György tér)
- Tram 1, Info park stop
- Budapest public transport (BKK) from any point in the city to Pázmány Péter sétány 1

From Railway stations (MÁV)



- **Déli station.:** take the red metro to Blaha Lujza tér, then tram 4 or 6 to Petőfi bridge, Buda bridgehead.
- **Kelenföldi station.:** tram 19-49 to Móricz Zsigmond körtér, then tram 6 to Petőfi bridge, to Buda Bridge.
- **Keleti station.:** take the red metro to Blaha Lujza tér, then tram 4 or 6 to Petőfi bridge, Buda side to Budapest bridgehead.
- **Nyugati station:** take tram no. 4 or 6 to Petőfi bridge, Buda side

From motorways by car



- M1 (E60, E75), M7 (E71): M1-M7 - Budaörsi út - Nagyszőlős u. - Bocskai út - Október 23. u. - Irinyi Irinyi József u.
- M3 (E71): M3 - Hungária boulevard - Könyves Kálmán boulevard - Lágymányosi bridge - Pázmány Péter promenade
- M5 (E75): M5 - Nagykőrösi út - Gyáli út - Könyves Kálmán körút - Lágymányosi bridge - Pázmány Peter Promenade

Social Programme



The Gala Dinner will be held on a boat during a cruise along the Danube River Friday, September 1st at 20:00.

Experience the beautiful sights of Budapest on a cruise along the Danube River. See famous landmarks such as the Chain Bridge, which connects the eastern and western sides of the city, as well as Buda Castle. On board you can enjoy a glass of wine and a buffet-style dinner included on the cruise.

Date: Friday, September 1st 2023

Meeting time: 19:45

Meeting point: Jászai Mari square, port no. 9

Entrance: 60€/ person

(buffet dinner & 1 glass of champagne / wine / soft drink / mineral water included)

Please ask for availability at the Welcome Desk.

Programme - Summary Version

Thursday, August 31

8.00-9.00	REGISTRATIONS (FOYER - I)				
	ROOM 058	ROOM 059	ROOM 060	GYORGY MARX	JEDLIK
9.00-12.00	WORKSHOP 1	WORKSHOP 3	WORKSHOP 4	WORKSHOP 5 (9.00-11.00)	WORKSHOP 2
12.00-13.00	LUNCH BREAK				
13.00-13.30	CONFERENCE ROOM				
	OPENING CEREMONY				
13.30-14.30	KEYNOTE 1 TAMAS ULLMAN & ANIKO GREGOR				
14.30-14.45	BREAK				
14.45-16.15	CONFERENCE ROOM	ORTVAY	GROH	BRUCKNER	JANOSSY
	INVITED SYMPOSIUM 1	SYMPOSIUM 1	SESSION 1	SESSION 2	SESSION 3
16.15-16.45	COFFEE BREAK HARMONY HALL (-I)				
16.45-18.15	SYMPOSIUM 2	SYMPOSIUM 3	SESSION 4	SESSION 5	SESSION 6
18.15-18.30	BREAK				
18.30-19.30	KEYNOTE2 JONATHAN SMITH				
19.30	WELCOME RECEPTION				

Friday, September 1

8.00-9.00	REGISTRATIONS (FOYER - I)				
	CONFERENCE ROOM	ORTVAY	GROH	BRUCKNER	JANOSSY
9.00-10.30	SYMPOSIUM 4	SESSION 7	SESSION 8	SESSION 9	SESSION 10
10.30-11.00	COFFEE BREAK HARMONY HALL (- I)				
11.00-12.30	SYMPOSIUM 5	SYMPOSIUM 6	SESSION 11	SESSION 12	SESSION 13
12.30-13.30	LUNCH BREAK / SCIENTIFIC COMMITTEE MEETING				
13.30-14.30	POSTER SESSION & AWARD HARMONY HALL (- I)				
14.30-14.45	BREAK				
14.45-16.15	INVITED SYMPOSIUM 2	SESSION 14	SESSION 15	SESSION 16	SESSION 17
16.15-16.45	COFFEE BREAK HARMONY HALL (- I)				
16.45-17.45	KEYNOTE 3 ELEFThERIA TSELIOU				
20.00	CONFERENCE DINNER				

Saturday, September 2

	CONFERENCE ROOM	ORTVAY	GROH	BRUCKNER	JANOSSY
9.00-10.30	SYMPOSIUM 7	SESSION 18	SESSION 19	SESSION 20	SESSION 21
10.30-11.00	COFFEE BREAK HARMONY HALL (-1)				
11.00-12.00	KEYNOTE 4 ERMINIA COLUCCI				
12.00-13.00	LUNCH BREAK				
13.00-15.00	CONFERENCE ROOM				
	FILM SCREENING				
15.00	CLOSING CEREMONY				

Conference Timetable

Thursday, August 31st

8:00am - 9:00am **REGISTRATIONS**

9:00am - 12:00pm **PRE-CONFERENCE WORKSHOPS**

(09:00-11:00) **How to analyze psychotherapeutic training processes with (critical) discursive research methodologies** | GYORGY MARX ROOM

Eleftheria Tseliou

University of Thessaly, Greece

Co-produced and participatory visual methods in cultural and global mental health research | ROOM 0.58

Erminia Colucci

Middlesex University, United Kingdom

Conversation analysis in the study of a grieving family and couple therapy | JEDLIK ROOM

Bernadetta Janusz, Anssi Peräkylä

Jagiellonian University, Poland

Teamwork in Qualitative Research: learning from the South Asia Self-harm project (SASHI) | ROOM 0.59

Anne Krayer

Bangor University, United Kingdom

Experience mapping in qualitative research: discovering embodied and embedded experiences in the lived space | ROOM 0.60

Viola Sallay, Tamás Martos

University of Szeged, Hungary

12:00pm - 1:00pm **LUNCH BREAK**

1:00pm - 1:30pm **Opening Ceremony | CONFERENCE ROOM**

KEYNOTE I | CONFERENCE ROOM

Chair: Viola Sallay

About the unequal social distribution of uncertainty

Anikó Gregor

ELTE University, Hungary

Uncertainty and existential thinking

Tamás Ullmann

ELTE University, Hungary

1:30pm - 2:30pm

2:30pm - 2:45pm **BREAK**

INVITED SYMPOSIUM I | CONFERENCE ROOM

2:45pm - 4:15pm

Explorations on researcher identity

Chair(s): Marta Erdos, *University of Pécs*; Rebeka Javor, *University of Pécs*

A qualitative researcher's social context. Joint explorations.

Rebeka Javor, Marta Erdos

University of Pécs, Hungary

Using qualitative methods to study the personal aspects of researcher identity

Marta Erdos, Rebeka Javor
University of Pécs, Hungary

Qualitative steps in designing an ISA/Ipseus instrument

Rebeka Javor, Marta Erdos
University of Pécs, Hungary

SYMPOSIUM I | ORTVAY ROOM**2:45pm - 4:15pm****Claiming experience? The ethics of critical and psychosocial Research**

Chair(s): David Wyn Jones, *Open University, United Kingdom*
 Discussant(s): D Jones, *Open University, United Kingdom*

Historiography and the experience of mental health and illness: the case of 'borderline'

David Wyn Jones
The Open University, United Kingdom

Trauma and Extremism: Practical and ethical challenges of integrating psychotherapy with narrative approaches in research into extremism.

Deepti Ramaswamy
Open University, United Kingdom

Graffiti and Wellbeing Project: Liminality, art and emotional expression in a secure mental health institution.

Laura McGrath
Open University, United Kingdom

2:45pm - 4:15pm**ORAL SESSION I | GROH ROOM**

Chair: Veronika Ferencz

"It's important to manage our stress": mental health advice in the Australian news media during the COVID-19 pandemic

Grace Rebecca Horwood, Martha Augoustinos, Clemence Due
University of Adelaide, Australia

"Hits harder than a heartbreak": A qualitative study on the well-being of student-athletes during the global health crisis

Maria Luisa Marcaida Guinto
University of the Philippines Diliman, Philippines

Patient experiences from within the Hungarian healthcare system during the COVID-19 pandemic – the controversial nature of self-care and resilience

Veronika Ferencz^{1,2}, Borbála Gabriella Koltai^{4,5}, Fanni Krisztina Berta², Ágota Cseh², Jozefa Gabriella Kerekes⁶, József Rácz^{2,3}

*1*Doctoral School of Psychology, ELTE Eötvös Loránd University, Budapest, Hungary; *2*Institute of Psychology, ELTE Eötvös Loránd University, Budapest, Hungary; *3*Semmelweis University, Faculty of Health Sciences, Department of Addictology, Budapest, Hungary; *4*Doctoral School of Education, ELTE Eötvös Loránd University, Budapest, Hungary; *5*Institute of Education, ELTE Eötvös Loránd University, Budapest, Hungary; *6*Pázmány Péter Catholic University, Department of Social and Behavioral Psychology, Budapest, Hungary

Interrupted lives: Well-being from the voice of elite athletes during the global pandemic

Maria Luisa Marcaida Guinto
University of the Philippines Diliman, Philippines

2:45pm - 4:15pm**ORAL SESSION 2 | BRUCKNER ROOM**

Chair: Anette Juel Kynde

Child welfare system inflicted trauma and parental decision-making

Darcey H. Merritt¹, Rachel Ludeke², Julie Halverson³
*1*University of Chicago, United States of America; *2*Thomas Jefferson University, Sidney Kimmel Medical College; *3*Artemis Research and Consulting, LLC

Systemic control and mental health: how Black CPS-impacted mothers show up in the world

Darcey H. Merritt¹, Rachel Ludeke², Julie Halverson³

1University of Chicago, United States of America; 2Thomas Jefferson University, Sidney Kimmel Medical College;

3Artemis Research and Consulting, LLC

Re-constructing parental identity after parents face their offspring's suicidal behaviour: an interview study

Anette Juel Kynde^{1, 2}, Anette Erlangsen², Lene Lauge Berring¹, Erik Roj Larsen³, Niels Buus⁴

1Psychiatric Research Unit, Psychiatry Region Zealand, Denmark; 2Danish Research Institute for Suicide Prevention,

Mental Health Centre Copenhagen, Denmark; 3Translational Neuropsychiatry Unit, Department of Clinical Medicine,

Aarhus University, Denmark; 4School of Nursing and Midwifery, Faculty of Medicine, Nursing and Health, Monash University, Clayton, Victoria, Australia

Is good parenting mean good exit strategies from the state funded educational and child welfare system?

Dorottya Sik, Andrea Rácz, Zsófia Tanító

ELTE TáTK, Hungary

2:45pm - 4:15pm

ORAL SESSION 3 | JANOSSY ROOM

Chair: Sione Vaka

Therapists of Colour's experience of perfectionism in personal therapy

Brittney Pilar Hamilton

The University of Manchester, United Kingdom

Researching mental health in the Pacific needs Pacific methodologies and models like talanoa and ūloa

Sione Vaka

University of Waikato, New Zealand

Ūloa, a model of care supporting people experiencing mental distress

Sione Vaka

University of Waikato, New Zealand

4:15pm - 4:45pm

COFFEE BREAK

4:45pm - 6:15pm

SYMPOSIUM 2 | CONFERENCE ROOM

Informal coercion and psychological pressure in mental healthcare –how can qualitative research contribute to a better understanding of the phenomenon?

Chair(s): Christin Hempeler, *Ruhr-University Bochum, Germany*; Matthé Scholten, *Ruhr-University Bochum*

“Voluntary in quotation marks”: a conceptual model of psychological pressure in mental healthcare based on a grounded theory analysis of interviews with service user

Sarah Potthoff, Christin Hempeler, Jakov Gather, Astrid Gieselmann, Matthé Scholten

Ruhr-University Bochum, Germany

Psychological pressure in the clinical and private context – perspectives of relatives of mental healthcare service users

Christin Hempeler, Matthé Scholten, Jakov Gather, Georg Juckel, Sarah Potthoff

Ruhr-University Bochum, Germany

Research ethics in practice: A reflection on ethical issues encountered in a qualitative health research study with mental health service users and relatives

Sarah Potthoff, Christin Hempeler, Jakov Gather, Astrid Gieselmann, Jochen Vollmann, Matthé Scholten

Ruhr-University Bochum, Germany

SYMPOSIUM 3 | ORTVAY ROOM**4:45pm - 6:15pm****"Glimpses into the process": Qualitative research methods in the study of individual, group and couple therapy.**

Chair(s): Athena Androutsopoulou, 'Logo Psychis'- Training and Research Institute for Systemic Psychotherapy, Greece; Tsabika Bafiti, 'Logo Psychis'- Training and Research Institute for Systemic Psychotherapy, Greece

Discussant(s): Eugenie Georgaca, Aristoteleio University of Thessaloniki, Greece

"This is what touched me". Reflexivity regarding important therapeutic factors in a group therapy session

Tsabika Bafiti, Eleni Kyriazopoulou, Sofia Papageorgiou, Peggy Poimenidou
'Logo Psychis'- Training and Research Institute for Systemic Psychotherapy, Greece

'My early days in therapy': Individual clients reflect on their initial sessions in long-term therapy

Tsabika Bafiti, Eleni Kyriazopoulou, Sofia Papageorgiou, Peggy Poimenidou
'Logo Psychis'- Training and Research Institute for Systemic Psychotherapy, Greece

'Toward the bright side of life': Processes of theme co-construction and revision in systemic group-therapy

Pigi Poimenidou, Despoina Biniori, Maria Christodoulaki, Katerina Zerma, Athena Androutsopoulou
'Logo Psychis'- Training and Research Institute for Systemic Psychotherapy, Greece

"What are the limits of the said?" Therapist and couple negotiate dialogical space.

Athena Androutsopoulou, Venetia-Anna Lampropoulou, Chrysoula Bourtzinakou, Ourania Avrana, Ioanna Soulioti
'Logo Psychis'- Training and Research Institute for Systemic Psychotherapy, Greece

4:45pm - 6:15pm**ORAL SESSION 4 | GROH ROOM**

Chair: Rene Diane Drumm

"I don't believe that I was prepared to pastor": Clergy experiences in leaving pastoral ministry

Tara Hargrove¹, Linda Crumley², Rene Diane Drumm³
1 Pacific Union College; 2 Walla Walla University; 3 Andrews University, United States of America

Agroecological farmers' experiences of land work: reciprocal healing and connection

Isabella Virginia Mighetto
Regent's University London, United Kingdom

Nature experience, mental well-being and the compassionate society – messages from collaborative research with blind and partially sighted participants

Barbara Mihók¹, Anna Mária Ballai², Bálint Balázs¹
1 ESSRG Nonprofit Kft, Hungary; 2 Blind and Partially Sighted Association in Csongrád-Csanád County (VAGYCSOME), Hungary

4:45pm - 6:15pm**ORAL SESSION 5 | BRUCKNER ROOM**

Chair: Charmaine Cordelia Williams

Combined diabetes and mental healthcare- an ethnographic study

Vicki Zabell¹, Sidse Arnfred¹, Sabrina Trappaud Rønne¹, Birgitte Lerbæk², Lene Lauge Berring¹, Rikke Jørgensen²
1 Region Zealand, Denmark; 2 Unit for Psychiatric Research, Aalborg University Hospital

Diabetes care in kindergartens and schools from the perspectives of teachers

Maria Dora Horvath^{1, 2}, Orsolya Papp-Zipernovszky³, Zsanett Tesch¹, Norbert Buzas¹

¹Albert Szent-Györgyi Medical School, Department of Health Economics, University of Szeged, Szeged, Hungary;

²Institute of Psychology, Department of Personality, Clinical and Health Psychology, University of Szeged, Szeged,

³Institute of Psychology, Department of Personality and Health Psychology, Eötvös Loránd University, Faculty of Education and Psychology, Budapest, 1064, Hungary

Using case study research to build the evidence for more responsive supports to racial, gender and sexual minority clients living with depression

Charmaine Cordelia Williams

University of Toronto, Canada

Living with and Living by Tattoos – Discursive Analysis of a Bodily Practice

Csilla Csekő¹, Péter Bodor²

¹University of Pécs, Faculty of Arts, Hungary; ²ELTE Faculty of Social Sciences, Institute of Sociology, Hungary

4:45pm – 6:15pm

ORAL SESSION 6 | JANOSSY ROOM

Chair: Annie Gowing

School connectedness: A mental health resource for young people

Annie Gowing

The University of Melbourne, Australia

The Family-School Connection: Perspectives of young children who attend the Learning Support Centre and their families'

Kylie Poppe, Angela Abela

University of Malta, Malta

Exploring the Concept of Teacher Wellbeing: A Qualitative Investigation with Primary School Teachers in the UK

Mumine Ozturk

University of Manchester, United Kingdom

6:15pm – 6:30pm

BREAK

6:30pm – 7:30pm

KEYNOTE 2 (ONLINE) | CONFERENCE ROOM

Chair: Angela Abela

Travelling in time: using interpretative phenomenological analysis (IPA) to examine temporal aspects of the personal experience of mental health issues

Jonathan Smith

Birkbeck University of London, United Kingdom

7:30pm

WELCOME RECEPTION

Friday, September 1st

8:00am - 9:00am

Registration @ Welcome Desk

9:00am - 10:30am

SYMPOSIUM 4 | CONFERENCE ROOM

Experience mapping in qualitative interviewing in health and well-being research

Chair(s): Viola Sallay, *Department of Personality, Clinical and Health Psychology, University of Szeged, Hungary*

Discussant(s): Márta Csabai, *Károli Gáspár University, Budapest, Hungary*

Self-regulation and coping processes in the family home of parents raising children with atypical development

Petra Simon-Zámbori¹, Zsófia Bana², Tamás Martos³, Viola Sallay³

¹*Doctoral School of Education, University of Szeged, Hungary*, ²*Department of Clinical Psychology, Semmelweis University, Budapest, Hungary*, ³*Department of Personality, Clinical and Health Psychology, University of Szeged, Hungary*

Relationships, places and experiences that lead to mental health in chronic illness

Doróttya Biró¹, Zsolt Szatmári¹, Tamás Martos², Viola Sallay²

¹*Clinical Medical Sciences Doctoral School, Faculty of Medicine, University of Szeged, Department of Personality, Clinical and Health Psychology, University of Szeged, Hungary*, ²*Department of Personality, Clinical and Health Psychology, University of Szeged, Hungary*

"This is my place, no one can take it from me" - Environmental - emotional self-regulation processes in the workplace - a study regarding physicians

Orsolya Gyöngyösi¹, Tamás Martos², Viola Sallay²

¹*Clinical Medical Sciences Doctoral School, Faculty of Medicine, University of Szeged, Department of Personality, Clinical and Health Psychology, University of Szeged, Hungary*, ²*Department of Personality, Clinical and Health Psychology, University of Szeged, Hungary*

9:00am - 10:30am

ORAL SESSION 7 | ORTVAY ROOM

Chair: Guido Veronese

Risk and protective factors among Palestinian children living under military occupation and political oppression

Guido Veronese, Federica Cavazzoni, Sabrina Russo, Haneen Ayoub
University of Milano-Bicocca, Italy

Re-adjusting to the civilian life: the transition experiences of retired Indian Army officers

Shivani Sachdev, Shikha Dixit
Indian Institute of Technology Kanpur, India

The post-traumatic growth of Ukraine war survivors: An interpretative phenomenological analysis

Sabrina Mahmood, Zsuzsa Kalo
Eotvos Lorand University, Hungary

Researching trauma and mass violence: reflexivity, participation, and agency

Gina Donoso
Central European University, Hungary

9:00am - 10:30am

ORAL SESSION 8 | GROH ROOM

Chair: Ola Demkowicz

Adolescent girls' perspectives on current rates of low mood and anxiety: a co-production qualitative exploration

Ola Demkowicz¹, Rebecca Jefferson⁴, Pratyasha Nanda², Lucy Foulkes³

¹*University of Manchester, United Kingdom*; ²*Common Room*; ³*University of Oxford*; ⁴*University of Central Lancashire*

Understanding the pressure and self-management strategies of adolescent girls in their daily lives: an innovative interdisciplinary approach to capture everyday experiences

Rachel Anne Starr, [Joanna Elizabeth Farr](#)
Birkbeck University of London, United Kingdom

“Unexpected” suicides by adolescents: lessons for suicide prevention

[Diana Van Bergen](#)¹, Saskia Merelle², Milou Looijmans², Caitlin Grieve¹, Oliver Konrad³, Elias Balt²
1The University of Groningen, the Netherlands; 2113 Suicide Prevention, the Netherlands; 3Institut d'études politiques de Paris

The social process of youth recovery and identity formation during early psychosis – a meta-ethnography

[Ida Storm](#)^{1,2,3}, Anne Kathrine Kousgaard Mikkelsen^{1,2}, Mari Holen⁴, Lisbeth Hybholt^{1,2,3}, Stephen Fitzgerald Austin^{1,2,5,6}, Lene Lauge Berring^{1,3,5}
1Research Unit, Mental Health Services East, Smedegade 16, 4000 Roskilde, Psychiatry Region Zealand, Denmark; 2Psychiatric Research Unit, Fælledvej 6, 4200 Slagelse, Psychiatry Region Zealand, Denmark.; 3Institute of Regional Health Research, University of Southern Denmark, Odense, Denmark.; 4Health and Society, Department of People and Technology, Roskilde University.; 5Psychiatric Research Unit, Centre for Relation & De-escalation, Mental Health Services, Fælledvej 6, 4200 Slagelse, Psychiatry Region Zealand, Denmark.; 6Institute for Psychology, University of Southern Denmark.

9:00am – 10:30am

ORAL SESSION 9 | BRUCKNER ROOM

Chair: Marina Helen Morrow

Realizing human rights and equity in community based mental health services: Addressing deepening inequities through community-based responses

[Marina Helen Morrow](#)¹, Susan Lynn Hardie²
1York university, Canada; 2Eviance

“I wish I could have a medical bracelet saying that if I have a crisis, do not call 911”: Transgender and gender diverse people’s experiences of acute and post-discharge mental healthcare

[June Lam](#)
University of Toronto, Canada

Keeping up with the normies: SpongeBob Squarepants and intertextuality in mental health memes

[Reeta Adele Karjalainen](#)
University of Jyväskylä, Finland

Suicide and social exclusion: Thinking beyond individualised disconnectedness

[Rebecca Helman](#), Joe Anderson, Sarah Huque, Amy Chandler
University of Edinburgh, United Kingdom

9:00am – 10:30am

ORAL SESSION 10 | JANOSSY ROOM

Chair: Stephanie Dale

Working through relational trauma: An exploration of narratives of lived experiences of trauma and recovery.

[Penn Smith](#), Divine Charura
York St John University, United Kingdom

Community discourses about recovery from disaster: perspectives on recovery voiced by community members four and five years after the Grenfell fire.

[Naureen Whittinger](#), Sarah Helps
National Health Service, United Kingdom

“I really needed to scream”: How a longitudinal qualitative study bridged geographical and social isolation during COVID-19 in Australia

[Stephanie Dale](#)
Queensland University of Technology, Australia

Letters from home – an interpretive exploration of the experiences of people who were children during World War Two

Karen Julie Longson

Keele University, United Kingdom

10:30am - 11:00am COFFEE BREAK

SYMPOSIUM 5 | CONFERENCE ROOM

11:00am - 12:30pm

Family narratives after forced migration – exploring vulnerability and resilience

Chair(s): Maria Borcsa, *University of Applied Sciences Nordhausen, Germany*

Discussant(s): Erminia Colucci, *Middlesex University, United Kingdom*

Transgenerational scripts of resettlement and migration. Interactional displays of memory

Bernadetta Janusz¹, Paweł Landwójtowicz², Dietmar Wetzel³, Maria Borcsa⁴

¹Family Therapy and Psychosomatics Department, Medical College, Jagiellonian University, Poland, ²Department of Pastoral Care, Institute of Pastoral Theology, Faculty of Theology, Catholic University of Lublin, Poland, ³MSH Medical School, Faculty of Human Sciences, Department of Education, Hamburg, Germany, ⁴Institute for Social Medicine, Rehabilitation Sciences and Health Care Research, University of Applied Sciences Nordhausen, Germany

Reconstructions of narrative identities after forced migration

Maria Borcsa, Paula Witzel

Institute for Social Medicine, Rehabilitation Sciences and Health Care Research, University of Applied Sciences Nordhausen, Germany

Researcher 's positioning. Reflexivity at the initial stage of the research project 'transgenerational effects of forced migration'

Antonina Bryniarska¹, Barbara Wojszel², Bernadetta Janusz³, Swetłana Mróz², Natalia Śmierciak⁴, Ewelina Startek⁵, Barbara Józefik¹

¹Laboratory of Psychology and Systemic Psychotherapy, Department of Child and Adolescent Psychiatry, Jagiellonian University Medical College, Cracow, Poland, ²Outpatient Clinic for Child and Adolescent Psychiatry, Department for Child and Adolescent Psychiatry, The University Hospital, Cracow, Poland, ³Department of Family Therapy and Psychosomatics, Faculty of Psychiatry, Jagiellonian University CM, Cracow, Poland, ⁴Department for Child and Adolescent Psychiatry, The University Hospital, Cracow, Poland, ⁵Foundation 'Wolno Nam', Cracow, Poland

SYMPOSIUM 6 | ORTVAY ROOM

11:00am - 12:30pm

Bridging lives and systems: The power of Interpretative Phenomenological Analysis (IPA) to unearth, illuminate and privilege unheard voices that matter

Chair(s): Clare Catherine Finegan, *Dublin City University, Ireland*

Discussant(s): Kathleen Noone, *Dublin City University, Ireland*; Stephanie Dale, *Queensland University of Technology, Australia*

The untapped tacit power of Interpretative Phenomenological Analysis (IPA) as a qualitative research methodology in mental health and well-being research

Kathleen Noone

Dublin City University

Bridging the gap in organisational systems to support lives

Clare Finegan

Dublin City University

The power of IPA to speak for the longing of the human heart: The salutogenic imperative of making way for longing in public policy and discourse

Stephanie Dale

Queensland University of Technology (Australia)

11:00am - 12:30pm

ORAL SESSION I 1 | GROH ROOM

Chair: Marta Csabai

“Their voice becomes my voice”: Understanding the development of the dialogical self through the internalization of voices in group psychotherapy

Maria Viou, Eugenie Georgaca

Aristotle University of Thessaloniki, Greece

Evaluating mental health first aid, exploring workplace end-users’ experiences – a qualitative reflexive thematic analysis

Opeyemi Atanda, Patrick Callaghan, Eleni Vangeli, Paula Reavey

London South Bank University, United Kingdom

Development of drawing test and intervention tools in clinical health psychology

Márta Csabai¹, Melinda Látos², Zita Sándor³, Tünde Lévai²

1Károli Gáspár University of the Reformed Church, Budapest, Hungary; 2Department of Surgery, University of Szeged, Hungary; 3Faculty of Health and Social Sciences, Gál Ferenc University, Hungary

Synthesis of Interpretative Phenomenological Analysis studies – epistemology and a step-by-step guide

Asztrik Kovács, József Rácz

Eötvös Loránd University, Hungary

11:00am - 12:30pm

ORAL SESSION I 2 | BRUCKNER ROOM

Chair: Stefan Sjöström

Bringing ethnography and conversation analysis to everyday dementia environments

Felix Diaz

American University in Bulgaria, Bulgaria

Development of interview protocols for users and providers of mental health services as a research tool for decision-making practices in Latvia

Karina Konstantinova, Inese Stars, Solvita Olsena

University of Latvia, faculty of medicine, Riga, Latvia

Towards a theory of patient experiences

Stefan Sjöström

Uppsala University, Sweden

Qualitative steps in designing an ISA/Ipseus instrument

Rebeka Jávör, Marta B. Erdos

University of Pécs, Hungary

11:00am - 12:30pm

ORAL SESSION I 3 | JANOSSY ROOM

Chair: Zsófia Székely

Engaging in feminist and liberating practices: Lessons from Palestine.

Federica Cavazzoni¹, Guido Veronese¹, Haneen Ayoub¹, Mona Nofal¹, Rozyan AbuHawila², Cindy Sousa³

1University of Milano-Bicocca, Italy; 2Gaza Community Mental Health Program, Palestine; 3Bryn Mawr College, USA

Pain, spirit, initiation: women’s experiences in alterations of consciousness during childbirth

Zsófia Székely¹, Júlia Barcsák², Eszter Tamási²

1ELTE, Hungary; 2PPKE, Hungary

Relationship and sexual expectations as discussed by mothers residing at a temporary shelter: A Thematic Analysis

Anna Alexandrov^{1,2}, Zsuzsa Kaló²

1Doctoral School of Psychology, ELTE Eötvös Loránd University, Budapest, Hungary; 2Institute of Psychology, ELTE Eötvös Loránd University, Budapest, Hungary

Maltese women as students with ADHD in the school system: constructing the self through memory.

Lara Jane Gauci, Greta Darmanin Kissaun
University of Malta, Malta

12:30pm - 1:30pm LUNCH BREAK

12:30pm - 1:30pm SCIENTIFIC COMMITTEE MEETING

1:30pm - 2:30pm POSTER SESSION & AWARD | HARMONY HALL

P01. Living on the edge of distress: experiences of people with age-related macular degeneration navigating the hope-despair continuum

Jamie Enoch, Ahalya Subramanian, Carla Willig
City, University of London, United Kingdom

P02. Cultural sensitivity in forensic mental healthcare

Marjolein De Pau, Freya Vander Laenen, Stijn Vandeveld
Ghent University, Belgium

P03. Building bridges between school and adolescents' mental health: a qualitative research with teachers

Katia Daniele¹, Maria Benedetta Gambacorti Passerini¹, Lucia Zannini²
1University of Milano – Bicocca, Italy; 2University of Milan, Italy

P04. Reimagining a Sand Trays as a Qualitative Method

Lorien S. Jordan¹, Margie Pemu², Smruthi Chintakunta², Kadesha Treco²
1University of South Florida, United States of America; 2University of Arkansas, United States of America

P05. A new method for the discourse analysis: the ALCESTE software. A comparison with interpretative phenomenological analysis

Livia Sani, Yasmine Chemrouk, Marie-Frédérique Bacqué
University of Strasbourg, France

P06. Understanding employee engagement and emotional wellbeing in child exploitation support workers: An interpretative phenomenological analysis

Sarah-Jane Mason, Carrie Childs
University of Derby, United Kingdom

P07. Client early recollections in early and late phases of therapy can help monitor earned security: A qualitative study.

Leonidas Groneberg, Marinos Chatzopoulos, Diamanto Fragkiadaki, Katerina Kourea, Stella Metheniti
Logo Psychis - Training and Research Institute for Systemic Psychotherapy, Greece

P08. Voices to be heard: Understanding family perspectives in forensic care trajectories

Sara Rowaert¹, Marjolein De Pau¹, Florian De Meyer¹, Pablo Nicaise², Freya Vander Laenen¹, Wouter Vanderplassen¹
1Ghent University, Belgium; 2Catholic University of Louvain, Belgium

P09. Emotional experiences of qualitative researchers studying sensitive topics and/or vulnerable populations

Ciska Wittouck
Ghent University, Belgium

P10. The interpretation of labour pain in birth experiences of women giving birth at home

Júlia Rita Barcsák¹, Eszter Berán¹, Zsófia Székely²
1Pázmány Péter Katolikus Egyetem, Hungary; 2Eötvös Loránd Tudományegyetem, Hungary

P11. The mystery of birth: Spiritual experiences during labor and delivery: Qualitative research

Eszter Tamási¹, Szabolcs Urbán¹, Zsófia Székely²
1Pázmány Péter Catholic University, Hungary; 2Eötvös Loránd University

P12. Wellbeing in institutes of higher education: the time has come for healing the self and others

Karyn Anne Cooper¹, Robert Earle White²

1University of Toronto, Canada; 2St. Francis Xavier University

P13. Mental health impact of COVID-19 on adolescents and their families

Maria Stoimenou

Psychologist / Systemic Study and Training Center of Thessaloniki (Ke.S.Me.Th), Thessaloniki, Greece

2:30pm - 2:45pm

BREAK

2:45pm - 4:15pm

INVITED SYMPOSIUM 2 | CONFERENCE ROOM

Researching hard-to-reach children and their families using a creative methodology

Chair(s): Kylie Poppe, *University of Malta, Malta*; Angela Abela, *University of Malta, Malta*

Discussant(s): Erminia Colucci *Middlesex University, United Kingdom*

Using a creative methodology to engage with hard-to-reach populations in research - the scholarly work so far

Angela Abela

University of Malta, Malta

Presenting the hard-to-reach populations and the difficulties they encounter to be heard

Angela Abela

University of Malta, Malta

Working creatively with children and parents independent of each other – the challenges and the resources

Kylie Poppe

University of Malta, Malta

The culmination of the research study – bringing children and parents together in research

Kylie Poppe

University of Malta, Malta

2:45pm - 4:15pm

ORAL SESSION 14 | ORTVAY ROOM

Chair: Ana Teixeira de Melo

Mapping the complexity of case conceptualisations underlying assessments and interventions with multichallenged families with at-risk children

Ana Teixeira de Melo¹, Letícia Renault²

1Centre for Social Studies, University of Coimbra, Portugal; 2Centre for Social Studies, University of Coimbra, Portugal

Qualitative methods in exploring the cooperation between medical personnel and parents of adolescents with anorexia nervosa

Antonina Bryniarska¹, Barbara Wojszel², Barbara Józefik¹

1Laboratory of Psychology and Systemic Psychotherapy, Department of Child and Adolescent Psychiatry, Jagiellonian University Medical College, Cracow, Poland; 2Outpatient Clinic for Child and Adolescent Psychiatry, Department for Child and Adolescent Psychiatry, The University Hospital, Cracow, Poland

„Lost in space and time” – exploring fathers’ experiences on preterm birth

Marta B. Erdos¹, Dóra Monostori²

1University of Pécs, Hungary; 2University of Szeged

Canadian Mental Health Systems of Care: An interpretative phenomenological analysis of Parents’ Perspectives on Youth Suicide

Toula Kourgiantakis², Eunjung Lee¹

1University of Toronto, Canada; 2University of Toronto, Canada

2:45pm - 4:15pm

ORAL SESSION 15 | GROH ROOM

Chair: Magnus Mfoafo-M'Carthy

Cultural adaptation of therapeutic interventions – using a multidimensional ecosystemic comparative approach in family therapy researchBernhild Pfautsch*Tabor Protestant University of Applied Sciences, Germany***Conducting impactful qualitative research: Using Structured Interview Matrix (SIM) methodology as tool for building social connections among new immigrants in Southern Ontario, Canada**Festus Moasun², Magnus Mfoafo-M'Carthy¹, Jeff Grischow¹*1 Wilfrid Laurier University, Canada; 2 University of Regina***Mixed-method research to develop Suicide First Aid Guidelines for LMICs and migrant and refugee populations**Erminia Colucci*Middlesex University, United Kingdom***Torture sequelae in therapeutic space – a professional challenge in working with refugees**Veronika Wolf*Protestant University of Applied Science Bochum, Germany*

2:45pm - 4:15pm

ORAL SESSION 16 | BRUCKNER ROOM

Chair: Felix Diaz

The Connection- versus Outcome-orientation Model of Sexual Experiences (COMOS): Expert interviews as a basis for model and questionnaire developmentKatharina Weitkamp, Anna-Lisa Nemati*University of Zurich, Switzerland***How does the therapeutic system use the impulses of the Reflecting Team in the further course of couple therapy? An explorative study.**Kristin Hoffmann, Maria Borcsa*Nordhausen University of Applied Sciences, Germany***Dissemination of contextual behavioral science in low and middle income countries: A thematic analysis**Valeriya Sotnikova, Felix Diaz*American University in Bulgaria, Bulgaria***Using meta-ethnography collaboratively to synthesize knowledge about recovery from coercion in mental health care: Reflections and recommendations**Lene Berring¹, Eugenie Georgaca², Sophie Hirsch³, Hulia Bilgin⁴, Burcu Kömürçü Akik⁵, Merve Aydın⁶, Evi Verbeke⁷, Gino Maria Galeazzi⁸, Stijn Vanheule⁷, Davide Bertino⁸*1 Region Zealand Psychiatry/ University Of Southern Denmark, Denmark; 2 School of Psychology, Aristotle University of Thessaloniki, Greece; 3 Department for Psychiatry and Psychotherapy I, Faculty of Medicine, Ulm University, Germany; 4 Mental Health and Psychiatric Nursing, Florence Nightingale Nursing Faculty, Istanbul University-Cerrahpasa, Turkey.; 5 Department of Psychology, Faculty of Languages and History-Geography, Ankara University, Turkey.; 6 Mental Health and Psychiatric Nursing Department, Karadeniz Technical University, Turkey.; 7 Department of Psychoanalysis and Clinical Consulting, University of Ghent, Belgium.; 8 Department of Biomedical, Metabolic, and Neural Science, University of Modena and Reggio Emilia, Italy*

2:45pm - 4:15pm

ORAL SESSION 17 | JANOSSY ROOM

Chairs: Ottomar Bahrs & Kata Dóra Kiss

The body as a mediatorOttomar Bahrs*Dachverband Salutogenese e.V., Germany*

Let's talk about empathy in mental health's first-line psychological help: in depth qualitative study

Jennifer Denis, Gregory Ruidant
University of Mons, Belgium

Uncovering the complexities of Hungarian psychology education: A qualitative inquiry of student views

Kata Dóra Kiss, Márta Csabai
University of Pécs, Hungary

The paradox of well-being in sustainable agriculture from a mental health perspective

Ilona Liliána Birtalan^{1,2,3}, Imre Fertó^{4,5}, Ágnes Neulinger⁶, József Rácz^{2,7}, Attila Oláh²

1Doctoral School of Psychology, ELTE Eötvös Loránd University; 2Institute of Psychology, ELTE Eötvös Loránd University; 3Health Promotion and Sport Sciences, ELTE Eötvös Loránd University; 4Institute of Economics, Centre for Economic and Regional Studies, Hungarian Academy of Sciences; 5Hungarian Agricultural and Life Science University, Kaposvár Campus; 6Department of Marketing and Tourism, University of Pécs; 7Faculty of Health Sciences, Semmelweis University

4:15pm - 4:45pm

COFFEE BREAK

4:45pm - 5:45pm

KEYNOTE 3 | CONFERENCE ROOM

Chair: Maria Borcsa

Knowing in context: The contribution of discursive research methodologies to living with uncertainty in mental health clinical practice

Eleftheria Tseliou

University of Thessaly, Greece

8:00pm

CONFERENCE DINNER

Cruise along the Danube River

Saturday, September 2nd

SYMPOSIUM 7 | CONFERENCE ROOM

9:00am - 10:30am

Multifamily therapy in community mental health services

Chair(s): Valeria Pomini (*Department of Psychiatry, National & Kapodistrian University of Athens, Greece*), Gilbert Lemmens (*Department of Head and Skin – Psychiatry, Ghent University, Ghent, Belgium*)

Family support groups for family members of mentally ill offenders: Family expectations and treatment experiences

Sara Rowaert¹, Stijn Vandeveldel¹, Kurt Audenaert², Gilbert Lemmens²

¹Department of Special Needs Education, Ghent University, ²Department of Head and Skin – Psychiatry, Ghent University

Athens multifamily group therapy project (A- MFGT) after a first psychotic episode

Mirjana Selakovic¹, Afrodite Zartaloudi², Dimitris Galanis³, Dionysia Koutsis⁴, Valeria Pomini⁵

¹Department of Psychiatry – “Sismanoglio” General Hospital, Athens, Greece, ²Department of Nursing, University of West Attica, Athens, Greece, ³EPAPSY, Athens, Greece, ⁴School of Psychology, University of Ioannina, Greece, ⁵Mariavaleria Pomini

Multifamily group therapy in a NHS mental health service

Lucy Hickey, Maeve Malley, Fernitta Osei-Mensah

Greenwich Adult Mental Health Services, Oxleas NHS Foundation Trust, London, United Kingdom

9:00am - 10:30am

ORAL SESSION 18 | ORTVAY ROOM

Chair: Anne Krayer

Insight into the state of mental health of social sector workers in Hungary

Katalin Galambos¹, Péter Juhász^{1,2}, Szilvia Ádám^{1,2}, Éva Bódy^{1,2}, Tímea Seres-Pittlik^{1,2}

¹Institute of Advanced Studies (iASK), Kőszeg, Hungary; ²Semmelweis University, Health Services Management Training Centre, Budapest, Hungary

Perceptions of hospital staff on suicide and self-harm in South Asia

Anne Krayer¹, Sudeep PK²

¹Bangor University, United Kingdom; ²JSS Medical College, Mysore, India

How do people recover from being exposed to coercion in mental health services? Reporting on the findings of a meta-ethnography

Eugenie Georgaca¹, Sophie Hirsch², Davide Bertani³, Hülya Bilgin⁴, Burcu Kömürçü Akik⁵, Merve Aydın⁶, Evi Verbeke⁷, Gian Maria Galeazzi³, Stijn Vanheule⁷, Lene Lauge Berring⁸

¹Aristotle University of Thessaloniki, Greece; ²Department for Psychiatry and Psychotherapy I, Faculty of Medicine, Ulm University, Germany; ³Department of Biomedical, Metabolic, and Neural Science, University of Modena and Reggio Emilia, Italy; ⁴Mental Health and Psychiatric Nursing, Florence Nightingale Nursing Faculty, Istanbul University-Cerrahpasa, Turkey; ⁵Department of Psychology, Faculty of Languages and History-Geography, Ankara University, Turkey; ⁶Mental Health and Psychiatric Nursing Department, Karadeniz Technical University, Turkey; ⁷Department of Psychoanalysis and Clinical Consulting, University of Ghent, Belgium; ⁸Psychiatric Research Unit, Psychiatry Region Zealand, 4200 Slagelse, Denmark

Discourse of depression-related sick leaves in patient's narratives and in online press articles

Magdalena Witkovicz

Uniwersytet Wrocławski, Poland

9:00am - 10:30am

ORAL SESSION 19 | GROH ROOM

Chair: Ferenc Császár

Early recovery from novel psychoactive use dependence

Ferenc Császár^{1,2}, Márta dr.B.Erdős³, Rebeka dr.Jávor³

¹Szigetvár Hospital, Department of Psychiatric Rehabilitation, Hungary; ²University of Pécs, Doctoral School of Neurosciences, Hungary; ³University of Pécs, Faculty of Humanities and Social Sciences, Department of Community and Social Studies

Post-legalization of recreational cannabis use: Perspectives of Canadian youth, parents, and service providers

Toula Kourgiantakis², [Eunjung Lee](#)¹

1University of Toronto, Canada; 2University of Toronto, Canada

'Chicks Day' for women who inject drugs: Reflections on participatory visual methods research

[Camille Stengel](#)

Nesta, United Kingdom

The everyday life of people living in the most disadvantaged areas

[Tünde Szabó](#)¹, [Éva Huszti](#)²

1Eötvös Loránd University, Hungary; 2University of Debrecen, Department of Sociology and Social Policy

9:00am - 10:30am

ORAL SESSION 20 | BRUCKNER ROOM

Chair: [Livia Sani](#)

Stress Management in the Practice and Training of Performing Arts

[Ildikó Gaál](#)

Hungarian Dance University, Hungary

The role and characteristics of self-justification in the conflict stories of healthcare professionals

[Dóra Kocsis](#)^{1,2}, [Márta Csabai](#)^{2,3}, [Ágnes Kuna](#)⁴

1ImproversGroup, Hungary; 2Institute of Psychology, University of Szeged; 3Institute of Psychology, Károli Gáspár University of the Reformed Church; 4Department of Applied Linguistics and Phonetics, Eötvös Loránd University of Sciences

Addressing key ethical concerns in Photovoice projects

[Sarah Cilia Vincenti](#), [Michael Galea](#), [Vince Briffa](#)

University of Malta, Malta

Alceste, a qualitative software to evaluate latent content of speech: the trajectory of spousal bereavement.

[Yasmine Chemrouk](#)¹, [Livia Sani](#)¹, [Delphine Peyrat-Apicella](#)², [Rozenn Le Berre](#)³, [Marie-Frédérique Bacqué](#)¹

1University of Strasbourg, France; 2Sorbonne Paris North University, France; 3The Catholic University of Lille, France

9:00am - 10:30am

ORAL SESSION 21 | JANOSSY ROOM

Chair: [Reitske Meganck](#)

THE (EM)POWER(ING) STORIES. Understanding adolescent motherhood through Digital Storytelling

[Eszter Pados](#)^{1,2}, [Anita Lanszki](#)^{4,5}, [Kata Horváth](#)², [József Rácz](#)^{2,3}

1Doctoral School of Psychology, ELTE Eötvös Loránd University, Budapest, Hungary; 2Institute of Psychology, ELTE Eötvös Loránd University, Budapest, Hungary; 3Simmelweis University, Faculty of Health Sciences, Department of Addictology, Budapest, Hungary; 4Department of Pedagogy and Psychology, Hungarian Dance University, Budapest, Hungary; 5Faculty of Education and Psychology, ELTE Eötvös Loránd University, Budapest, Hungary

Constructing motherhood in times of social isolation

[Reitske Meganck](#)

Ghent University, Belgium

Pushing down the daisies – How to improve elderly people's mental health in nursing home care

[Laura Posta](#), [Eszter Berán](#)

Pázmány Péter Catholic University, Hungary

The Experiences of Older Adults with Digitalization and its Effect on Mental Health

[Edit Andrea Pauló](#)

ELTE University, Hungary

10:30am - 11:00am	COFFEE BREAK
11:00am - 12:00pm	KEYNOTE 4 CONFERENCE ROOM Chair: Zsuzsa Kaló Arts-based and visual methods in activist mental health research in LMICs and among people from migrant and refugee backgrounds <u>Erminia Colucci</u> <i>Middlesex University, United Kingdom</i>
12:00pm - 1:00pm	LUNCH BREAK
1:00pm - 3:00pm	FILM SCREENING CONFERENCE ROOM Harmoni: Healing together (Indonesia)
3:00pm	CLOSING CEREMONY





